



## Math is for everyone

### Questionnaire

*This questionnaire is not to measure your knowledge.  
This questionnaire is to get your opinion about situations  
found in everyday life.  
Thank you for your answer!*

*There will be more questions on the next pages. You must not  
answer the questions. Tick to indicate how difficult it is to  
answer the questions.*

*All emojis designed by OpenMoji – the open-source emoji and icon project. License: CC BY-SA  
4.0*

 <b>Vanskelig</b>	 <b>Går greit</b>	 <b>Lett</b>
---	---	--

TRANSLATION OF SMILEY FACES' TEXT: DIFFICULT. FINE.  
EASY.

1. How old are you?

2. Do you have a developmental disability?

☐ Yes

☐ No

3. Would you like to say what diagnosis you have?

4. If no: Do you have a person in your family with a developmental disability?

☐ Yes

☐ No

5. If no: Do you work with people with developmental disabilities?

☐ Yes

☐ No

6. 6b. Is the term "developmental disability" correct?

☐ Yes

☐ No

7. 6b. Can you suggest a different term?

8. Now come more questions. How difficult is it to answer?

How many people can sit at the table?

☐☐☐

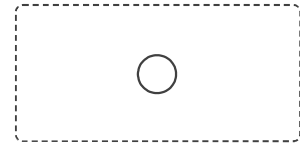
9. If you have twelve hamburgers, how many will there be for each of the people sitting?

☐☐☐

10. Which answer suits you best?



a. Four people can sit.



b. There is one person for each chair. I count chairs. There are four of them.



c. There is one person for each chair. I count chairs.



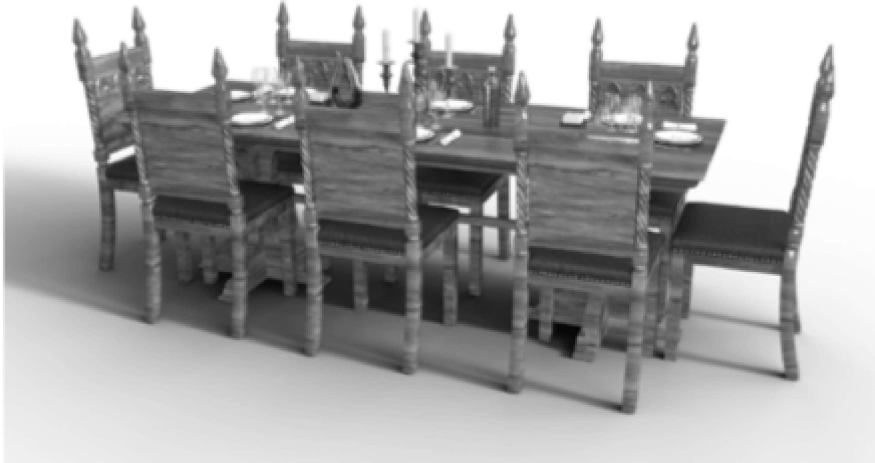
11. There will be two more people. How many will there be then?



.



12. How many people will sit here?



13. Two call and say they can't come. How many people will be sitting here then?



14. Is it easy to understand?

☐☐☐

15. Is it easy to understand?

☐☐☐

16. Is it easy to understand?

☐☐☐

17. Is it easy to understand?

13:55

☐☐☐

18. Is it clear if I say:

a. At 7 I wake up

b. At 7.30 I eat breakfast

c. At 8 I go to work or school

☐☐☐

19. Is it easier to understand if I say:

a. Først våkner jeg



b. Etterpå spiser jeg frokost



c. Så drar jeg til jobben eller skolen



PICTURES' TRANSLATION:

FIRST I WAKE UP. AFTERWARDS I EAT BREAKFAST. THEN I  
GO TO WORK OR SCHOOL.





20. What do you think:

a. Is it easy to understand whether the sweater is cheap or expensive?



5000 kr

PRICE: \$500

☐☐☐

21. What do you think:

b. Is it cheap?

☐ Yes

☐ No

22. Is it easy to understand whether the sweater is cheap or expensive?



5231 kr

PRICE: \$523

☐☐☐

23. What do you think:

a. Is it easy to understand if the price is right?



4870 kr

PRICE: \$487

☐☐☐

24. What do you think:

b. Is it cheap for a new phone?

☐ Yes

☐ No

25. Is it easy to find the store where you usually shop?

☐☐☐

26. Is it easy to find a new store?

☐☐☐

27. Is it easy to remember the way when you have to go back from somewhere?

☐☐☐

28. <>. Is it easy to understand the way when some people tell you, if you know the area?

☐☐☐

29. <>. Is it easy to understand the way when some people tell you, if you know the area?

☐☐☐

30. Is it easy for you to explain a familiar path to someone else?

☐☐☐

31. What suits you best?



a. When I get a task, I try to think how I have done this before.

☐☐☐

b. When faced with a task, I try different methods to see if they work.

☐☐☐

c. When I encounter a problem, I guess to solve it.

☐☐☐

32. If you don't know how to solve a task:



a. I am asking for advice.

☐☐☐

b. I ask others if they can solve the task.

☐☐☐

c. I do nothing.

☐☐☐

33. I like having new challenges.



.

☐☐☐

34. I like routines, but I also like to learn new things (to master new things).



.

☐☐☐

35. It is important to be prepared for new things.



.

☐☐☐

36. I like doing the same things over and over again.

☐☐☐

37. Is it easy to understand how to make the dish?

1 egg
2 spiseskje av sukker
50 g smør
100 g mel

RECIPE TRANSLATION: 1 EGG. 2 TABLESPOONS OF SUGAR.  
50 g OF BUTTER. 100 g OF FLOUR.

☐☐☐

38. Is it easy to understand how to make the dish?

☐☐☐

39. Is it easy to tell someone you know well if you don't understand?

☐☐☐

40. Is it easy to tell someone you don't know well if you don't understand?

☐☐☐

41. Is it important to have plenty of time to think about what you are going to answer?

☐☐☐

42. Do you like to have support from images when you have to do something, or learning something new?

☐☐☐

43. How did you like answering these questions?

☐☐☐

44. Do you have any comments?

Done

Powered by



SurveyMonkey®

See how easy it is to [create surveys](#) and [forms](#).



[Privacy & Cookie Notice](#)